



# The Federation of St Mary's Catholic Schools

*"I can do all things through Christ who strengthens me"*

*Philippians 4:13*

Respect

Compassion

Resilience

## Junior Ofsted Inspection

This week we had a visit from Ofsted to the junior school. We had three visitors, two of whom were His Majesty's Inspectors (HMI) and one team inspector. I would just like to thank the whole school community for making the inspectors feel warmly welcomed and in particular the staff, children, parents and governors. We will not know the outcome of the inspection until the final report is published in January 2023. At that point we will share the report with all our parents/carers. Once again, thank you to everyone who made a contribution to this inspection.

### In other news...

It was a magical start to the infants this week with a travelling theatre performance of Sleeping Beauty. Both the children and the staff absolutely loved what was a very special and professional performance.

### Food Glorious Food

The aroma in the junior hall this week was amazing. The Year 3 children had a super day of food technology with fresh onions, carrots, etc and they were all so excited they could hardly contain their enjoyment.

### PTFA AGM

Thank you to all the PTFA who had their AGM on Thursday at the infants. Our wonderful PTFA work tirelessly to raise additional funds for all the children in both schools and need as many volunteers as possible to strengthen the group. Anyone who is a parent/carer is invited to join the PTFA and would be most welcome.

### Maths Workshops

Thank you to staff and parents for making the maths workshops purposeful. Maths is different for children now compared to what us adults had to do, with so many more strategies and resources to help the children, and it is one of our key priorities. So, thank you to the parents who were able to attend and hopefully we will be doing more mathematics workshops as the year goes on.

Finally...well done to our football and Boccia teams who represented the school so well at tournaments this week. The footballers came 3rd in their group and the Boccia team participated well and enjoyed the experience. Have a great weekend. God Bless.

Executive Headteacher - Mr J Daley

Infant School  
Victoria Road  
Newton-Le-Willows  
WA12 9RX  
01744 678357  
stmaryrcni@sthelens.org.uk

Head of School – Infants - Mrs K Grange | Head of School – Juniors - Mrs N Follin

[www.federationofstmarys.co.uk](http://www.federationofstmarys.co.uk)

 @fedstmarys

Junior School  
Barn Way  
Newton-Le-Willows  
WA12 9QQ  
01744 678603  
stmaryrcnj@sthelens.org.uk



Thank you to all who attended the PTFA AGM on Thursday night. Thank you to the nominated officers who were voted into their roles.

The highlight of the evening was a presentation by Lucy.

### **5 good things about having my mum on the PTFA**

First of all, I get to attend and help at events.

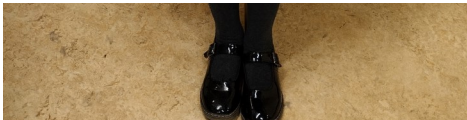
Secondly, I get to make friends from other year groups.

Thirdly, I can suggest ideas for fundraising events.

Fourthly, I can find out about events before others.

Fifthly, I feel proud and helpful when I help the PTFA and raise money for school.

Thank you to Lucy for sharing your thoughts. If you could not make the AGM but would like to get involved, please speak to either office or one of our



### **Y5 and Y6 World Cup Tournament**

St Helens Schools Games organised a World Cup Tournament, inviting previous teams back to compete in this.

Our combined Y5 and Y6 team did very well and came third overall.

Well done to the team!



### **Y6 Boccia Tournament**



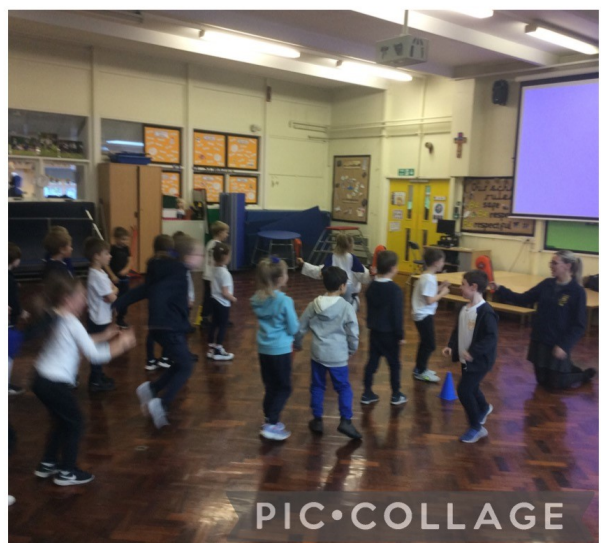
A group of Y6 pupils attended a Boccia tournament on Wednesday.

Boccia requires students to roll/throw their ball towards a target with accuracy whilst also taking into account the placement of their opponent's balls.

After the success of this tournament, Mrs Quirk is hoping to start a Boccia club at lunchtimes.

## Taekwondo

We enjoyed the fascinating, tremendous taekwondo lesson on Wednesday. Year 2 particularly liked using their hands and feet to safely complete taekwondo moves on the pads. We learnt how to aim for a target and use our body strength in different ways. During the taekwondo lesson we learnt how to help our friends and other people but it is important to only use the taekwondo moves when you are with a professional instructor! We learnt how to stay safe by listening to some interesting rules about when and where to use taekwondo moves.



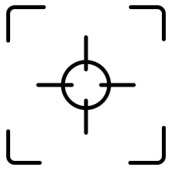
Taekwondo Sessions

PIC•COLLAGE

## Sleeping Beauty

This morning the Infant children were treated to a pantomime by M&M Productions. Their version of Sleeping Beauty was fantastic! Both the children and staff thoroughly enjoyed themselves and we all had a wonderful morning.





This week, our Y3 children completed a unit of work on 'Eating Seasonally' by making Vegetable Tarts. Our hall was converted into the Masterchef kitchens by the specialist company 'Apple of My Eye' and all the children took home what looked like a delicious main course.

## Focus on DT

### Key Skills that the children have developed:

- Creating a healthy and nutritious recipe for a savoury tart using seasonal ingredients, considering the taste, texture, smell and appearance of the dish.
- Knowing how to prepare themselves and a workspace to cook safely in, learning the basic rules to avoid food contamination.
- Following the instructions within a recipe.
- Establishing and using design criteria to help test and review dishes.
- Describing the benefits of seasonal fruits and vegetables and the impact on the environment.
- Suggesting points for improvement when making a seasonal tart.





# Non Uniform Day 2nd December

Come to school in non uniform in exchange for a colourful donation. Check out your year colour below!

All your donations will be made into hampers for the PTFA Christmas Raffle. Thank you for your ongoing support!

Nursery	Red
Reception	Orange
Year One	Yellow
Year Two	Green
Year Three	Blue
Year Four	Purple/Pink
Year Five	Black/White
Year Six	Silver/Gold

Can include, drinks, candles, sweets, stationery, toys, hair accessories, toiletries, chocolates, games, crafts, books....the possibilities are endless!

Please ensure all donations are unopened/clean/unused.  
Thank you!

## Christmas with St Mary's PTFA

Christmas Card & Gift Project  
Closes 11th November

Uniform Swap Shop Christmas  
Jumper Takeover

Colour Hamper Donations &  
Non-Uniform Day  
2nd December

Christmas Quiz  
9th December

Colour Hamper Draw  
15th December

Christmas Carol Refreshments  
19th December

Christmas Discos  
19th & 20th December

Christmas Present for Every  
Child

Plus funding for school  
Christmas refreshments &  
Movie & Bingo Nights



Following the PTFA AGM on  
Thursday evening your  
committee for the 22/23  
academic year are as follows

Kathryn Harrison	Chair
Olivia Lewis	Treasurer
Vicky Gregory	Secretary
Debbie Carroll	Ordinary Committee
Gill Maguire	Members

I would like to take this opportunity to thank the committee members for signing up to yet another year. Thank you to Laura McGee who has stepped down as a committee member for her years of service and welcome to Gill in her first year as a Committee Member.

**PTFA stands for Parents, Teachers and Friends Association, this means you are all automatically members of the association and more than welcome to come along to meetings and get involved. You'd be very welcome!**

<b>Dates for your diary – Autumn 2 – St Mary's Catholic Infant School</b>	
<b>Wed 30<sup>th</sup> November</b>	Movie night 3.15-5pm
<b>Tues 6<sup>th</sup> December</b>	Year 2 dance performance pm
<b>Wed 7<sup>th</sup> December</b>	KS1 Multi-skills competition
<b>Thurs 8<sup>th</sup> December</b>	Year 1 dance performance pm
<b>Tues 13<sup>th</sup> December</b>	KS1 Nativity performance-9.30am Reception Nativity performance-2pm
<b>Wed 14<sup>th</sup> December</b>	Reception Nativity performance-9.30am KS1 Nativity performance-2pm
<b>Fri 16<sup>th</sup> December</b>	Nursery Christmas sing a long- 2pm
<b>Mon 19<sup>th</sup> December</b>	<b>*Provisional*</b> 6.00: Carols by Candlelight at Ss Mary and John's Church.
<b>Wed 21<sup>st</sup> December</b>	<b>*Provisional*</b> 9.30: Whole School Mass at Ss Mary and John's Church. Y2-6 School closes at 3.30.

<b>Dates for your diary – Autumn 2 – Junior School</b>	
<b>Wed 30<sup>th</sup> November</b>	PTFA Christmas Bingo 3.30—5.15pm.
<b>Thurs 1<sup>st</sup> December</b>	Y6 Apple of my Eye – DT food day 4W swimming
<b>Friday 2<sup>nd</sup> December</b>	Colour hamper donations and non-uniform day
<b>Mon 5<sup>th</sup> December</b>	Visiting theatre company 'A Christmas Carol'
<b>Thurs 8<sup>th</sup> December</b>	4W swimming
<b>Friday 9<sup>th</sup> December</b>	PTFA Christmas Quiz
<b>Mon 12<sup>th</sup> December</b>	9.15: 5R Class Prayer and liturgy in Junior School Hall – families welcome
<b>Thurs 15<sup>th</sup> December</b>	2.00pm and 6.00pm: Y3 Christmas Production in Junior School Hall Y4 swimming (additional lesson for some children – children will be contacted separately).
<b>Mon 19<sup>th</sup> December</b>	<b>*Provisional*</b> 6.00: Carols by Candlelight at Ss Mary and John's Church.
<b>Wed 21<sup>st</sup> December</b>	<b>*Provisional*</b> 9.30: Whole School Mass at Ss Mary and John's Church. Y2-6 School closes at 3.30.



# STARS OF THE WEEK AND BEE AWARDS

	Star of the Week	Kindness Award
Nursery	Kevin	Cara
RM	Cam	Louie
RB	Willow C	Elliot
Y1O	Isla	Mia
Y1G	Lilyann	Evie
Y2M	Isaac	Noah
Y2T	Hallie	Martha

	Star of the Week	Bee Award
3Ri	Hannah	Orla C
3Ro	Phoebe	Logan M
4W	Emily	Avril
4M	Keira	All of 4M
5R	Ethan	Niamh
5HQ	Aaron	Oliver
6W	McKenzie	Rowan
6D	Amelia	Reece

## Respect & Manners Award

**Infants:** Dodge

**Juniors:** Lucy



## School Dinners

If your child wishes to change from packed lunches to school dinners or vice versa, please inform the school office before changing. Especially if you child is at the Infant school as we have to inform the kitchens at the juniors.



## St Mary's Uniform Guidelines

### Uniform EYFS Nursery & Reception

White polo shirt

Royal blue cardigan or sweatshirt with or without school logo

Grey skirt / trousers / shorts

Blue & white gingham or candy stripe dress (summer)

White or grey socks or grey tights

Sensible black shoes (no boots or trainers)

### Uniform KS1 and KS2

White shirt

School tie

Royal blue cardigan or sweatshirt with or without school logo

Grey skirt / trousers / shorts

Blue & white gingham or candy stripe dress (summer)

White or grey socks or grey tights

Sensible black shoes (**no** boots or trainers)

### PE Kit:

*Children come into school wearing their PE kit.*

White & royal blue top with school logo or plain white T shirt

Plain royal-blue shorts. No logos.

Plain navy-blue tracksuit bottoms or navy-blue leggings. No logos.

Plain navy-blue hoodie or jacket. No logos.

Pumps or trainers

### Hairstyles & Jewellery

All long hair must be tied back (from shoulder length).

We do not allow any 'extreme hairstyles,' including tramlines, mohicans or partly shaved styles or hair that is dyed. *If your child's hairstyle is unacceptable for school, you will be invited into school to discuss it.*

Jewellery is not allowed to be worn in school other than a watch. Smart watches are not allowed. Earrings are **NOT** to be worn due to health and safety reasons.